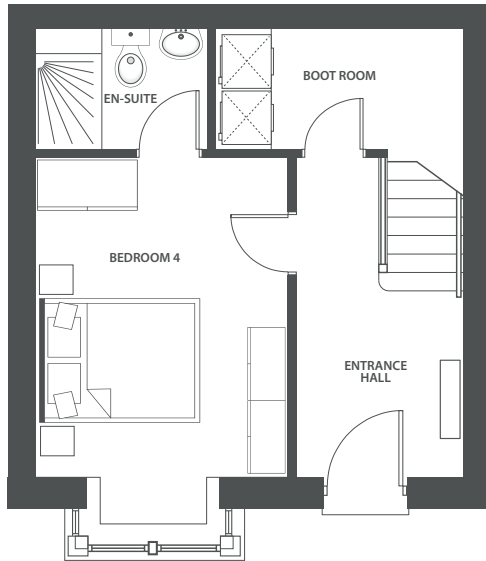


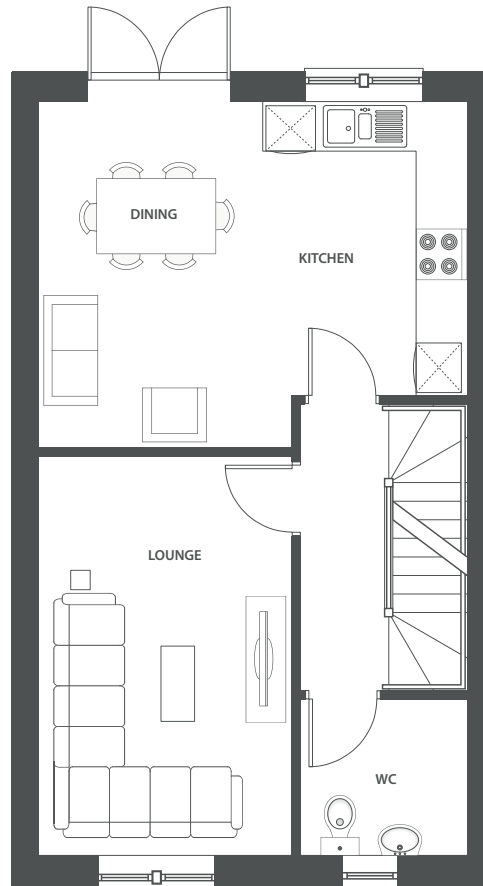
### INTERNAL FLOOR AREAS:

|                     |  |
|---------------------|--|
| LOWER GROUND FLOORS | 28.98 M <sup>2</sup>   311.96 FT <sup>2</sup>    |
| UPPER GROUND FLOOR  | 46.92 M <sup>2</sup>   505.01 FT <sup>2</sup>    |
| FIRST FLOOR         | 46.92 M <sup>2</sup>   505.01 FT <sup>2</sup>    |
| TOTAL               | 122.82 M <sup>2</sup>   1,321.98 FT <sup>2</sup> |



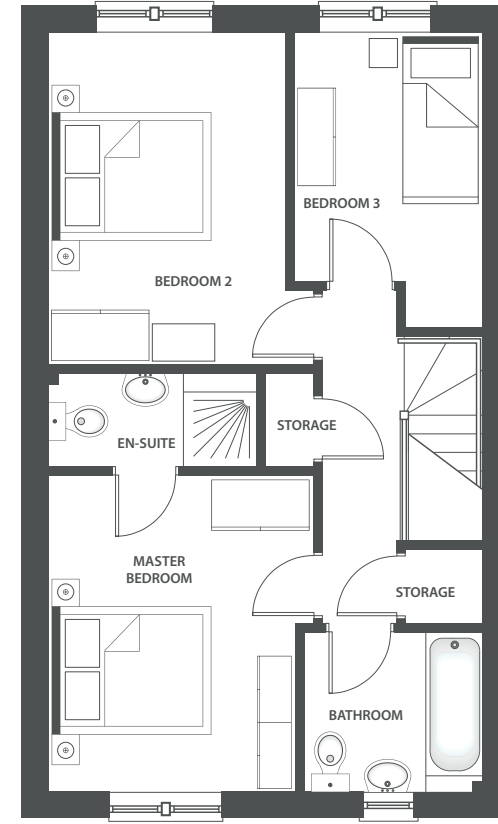
### LOWER GROUND FLOOR

|           |                               |
|-----------|-------------------------------|
| BEDROOM 4 | 4.50M X 3.05M   14'9" X 10'0" |
| EN-SUITE  | 2.27M X 1.60M   7'5" X 5'3"   |
| BOOT ROOM | 2.94M X 1.80M   9'8" X 5'10"  |



### UPPER GROUND FLOOR

|                           |                                |
|---------------------------|--------------------------------|
| LOUNGE                    | 4.82M X 3.05M   15'9" X 10'0"  |
| KITCHEN . FAMILY / DINING | 5.17M X 4.18M   16'11" X 13'0" |
| WC                        | 1.90M X 2.00M   6'3" X 6'7"    |



### FIRST FLOOR

|                |  |
|----------------|--|
| MASTER BEDROOM | 3.28M X 2.95M   10'9" X 9'8"                 |
| BEDROOM 2      | 3.15M X 3.97M   10'4" X 13'0"                |
| BEDROOM 3      | 3.53M X 2.20M   11'7" X 7'2" (MAX ROOM SIZE) |
| BATHROOM       | 2.10M X 1.90M   6'10" X 6'3"                 |